

11-20-2015

Imaging thermal conductivity with nanoscale resolution using a scanning spin probe

Abdelghani Laraoui
CUNY City College

Halley Aycock-Rizzo
CUNY Graduate Center

Yang Gao
CUNY Advanced Science Research Center

Xi Lu
Georgia Institute of Technology

Elisa Riedo
CUNY Advanced Science Research Center

See next page for additional authors

Follow this and additional works at: https://academicworks.cuny.edu/asrc_pubs

 Part of the [Semiconductor and Optical Materials Commons](#)

Recommended Citation

Laraoui, Abdelghani; Aycock-Rizzo, Halley; Gao, Yang; Lu, Xi; Riedo, Elisa; and Meriles, Carlos A., "Imaging thermal conductivity with nanoscale resolution using a scanning spin probe" (2015). *CUNY Academic Works*.
https://academicworks.cuny.edu/asrc_pubs/13

This Article is brought to you for free and open access by the Centers & Institutes at CUNY Academic Works. It has been accepted for inclusion in Advanced Science Research Center by an authorized administrator of CUNY Academic Works. For more information, please contact AcademicWorks@cuny.edu.

Authors

Abdelghani Laraoui, Halley Aycock-Rizzo, Yang Gao, Xi Lu, Elisa Riedo, and Carlos A. Meriles

ARTICLE

Received 7 May 2015 | Accepted 20 Oct 2015 | Published 20 Nov 2015

DOI: 10.1038/ncomms9954

OPEN

Imaging thermal conductivity with nanoscale resolution using a scanning spin probe

Abdelghani Laraoui¹, Halley Aycock-Rizzo^{1,2}, Yang Gao^{1,3,4}, Xi Lu⁴, Elisa Riedo^{1,3,4} & Carlos A. Meriles^{1,2}

The ability to probe nanoscale heat flow in a material is often limited by lack of spatial resolution. Here, we use a diamond-nanocrystal-hosted nitrogen-vacancy centre attached to the apex of a silicon thermal tip as a local temperature sensor. We apply an electrical current to heat up the tip and rely on the nitrogen vacancy to monitor the thermal changes the tip experiences as it is brought into contact with surfaces of varying thermal conductivity. By combining atomic force and confocal microscopy, we image phantom microstructures with nanoscale resolution, and attain excellent agreement between the thermal conductivity and topographic maps. The small mass and high thermal conductivity of the diamond host make the time response of our technique short, which we demonstrate by monitoring the tip temperature upon application of a heat pulse. Our approach promises multiple applications, from the investigation of phonon dynamics in nanostructures to the characterization of heterogeneous phase transitions and chemical reactions in various solid-state systems.

¹Department of Physics, CUNY-City College of New York, New York, New York 10031, USA. ²Physics Program, CUNY-The Graduate Center, New York, New York 10016, USA. ³CUNY-Advanced Science Research Center, New York, New York 10031, USA. ⁴Department of Physics, Georgia Institute of Technology, Atlanta, Georgia 30332, USA. Correspondence and requests for materials should be addressed to E.R. (email: elisa.riedo@asrc.cuny.edu) or to C.A.M. (email: cmeriles@sci.ccny.cuny.edu).

Over the last decade, nanoscale thermal transport has been at the centre of widespread interest, partly driven by a number of technologically important applications. For example, as the characteristic dimensions of current electronic devices approach a few tens of nanometres¹, fundamental differences between macro- and nanoscale thermal flow make device operation unreliable and complicate increased circuit integration. Nanoscale thermal transport also plays a critical role in the design of better thermal insulation² and enhanced thermoelectric energy recovery³ as well as in thermal nanolithography⁴ and the implementation of advanced magnetic storage devices that use thermal energy to manipulate local magnetic states⁵. Although much progress has been made in the recent past, many fundamental aspects of energy flow in nanostructures are not well understood, partly due to the experimental difficulties associated with high-resolution (<30 nm) thermal sensing. Moreover, observations are often indirect and rely on models difficult to verify unambiguously.

Here we articulate atomic force and confocal microscopy to demonstrate an alternate route to thermal conductivity imaging with nanoscale resolution. Our approach leverages on the unique properties of the nitrogen-vacancy (NV) centre in diamond, a spin-1 defect that can be individually initialized and readout with the aid of optical and microwave (mw) pulses⁶. Thermal changes in the NV vicinity can be detected by monitoring the NV spin resonance frequency, which strongly depends on the system temperature^{7–9}. In our experiments, we use a diamond-nanocrystal-hosted NV as a nanoscale probe attached to a sharp silicon tip. The latter is part of an atomic force microscope (AFM) cantilever with an integrated heater, which can be used to warm the tip to a predefined temperature above ambient. We obtain an image of the sample thermal conductivity as we record the NV temperature drop upon contact with the substrate for different tip positions in a broad range of model samples. Further, we show that the time response of our spin probe is fast, a consequence of the excellent thermal conductivity and minuscule mass of the diamond host. As the bulk of the sample substrate remains at a uniform, predefined temperature (ambient conditions in the present case), our technique extends the complementary notion of NV-assisted high-resolution thermometry (that is, imaging thermal gradients across a substrate¹⁰) as well as the use of the NV as a nanoscale magnetometer demonstrated recently^{11–13}.

Results

NV-assisted thermal sensing. A more detailed description of our working geometry is presented in Fig. 1: Our system articulates an AFM and a confocal microscope in a two-sided geometry. We use a thermal cantilever formed by two parallel arms of *n*-doped, electrically conductive silicon connected at one end. The small section of the cantilever above the tip is left purposely undoped and serves as a local heater upon injection of an electrical current. We mount the colour centre onto the tip apex by firmly scanning the AFM probe on a sample of disperse diamond nanocrystals loosely bound to a glass substrate. Van der Waals forces keep the nanoparticle securely attached to the tip surface¹⁴; images of a sample diamond crystal before and after AFM grafting are shown in Fig. 1b–e. We use a high-numerical-aperture objective facing the AFM tip to excite and collect fluorescence from the nanoparticle. Figure 1f–h shows successive confocal images recording the NV centre position as we displace the tip over a (semi) transparent substrate.

In our experiments, we apply a voltage difference between the arms of the cantilever to set the heater temperature T_h (see below Methods for details), which we then determine by monitoring the

NV response to mw. Figure 2a shows the optically detected electron spin resonance spectra at three different applied voltages, each exhibiting the characteristic NV fluorescence dips near 2.8 GHz (ref. 15). The nanoparticle temperature T_t follows from the known thermal dependence of the NV resonance frequency^{7,16} (Fig. 2b). As shown in the figure insert, T_t agrees well with the heater temperature T_h as determined from the circulating current and voltage drop at the cantilever. The latter is to be expected given the relatively homogeneous temperature distribution throughout the intrinsic section of the cantilever¹⁷ (at least in the absence of tip contact with a substrate, see below for details). It is worth mentioning that the absolute NV fluorescence is also a function of temperature^{8,16}, which can be exploited as an alternate (arguably simpler) modality of thermal sensing (Supplementary Fig. 1). This route, however, must be excluded in our present experiments given the two-sided geometry of our setup and concomitant dependence of the light collection efficiency on the tip position. Further, we show (Supplementary Note 1) that spin-assisted thermal sensing can attain significantly higher detection sensitivity, particularly given the ability to engineer nanoparticle-hosted NVs with near-bulk spin lifetimes¹⁸.

Interestingly, we find that more than one diamond particle can be attached to the AFM probe if, once loaded, the tip is brought into contact with another NV-hosting diamond crystal. This is shown in Fig. 2c, where we attach up to six nanocrystals upon repeated grafting. We find that the diamond particles decorate the tip apex more or less concentrically (Fig. 2c). Grafting a new particle (ND1, bright spot in the figure) pushes the rest farther deep and into the cantilever body allowing us to optically separate most NVs. Given the random orientation of each particle, we discriminate between NVs close to each other via the application of a small magnetic field. For a given applied voltage, we find identical frequency shifts in all NVs (Fig. 2d), indicative of a consistent thermal contact between the tip and the spin probe.

Characterization of sample substrates. Thermal energy is extracted from the tip when physical contact is made with a substrate at a lower temperature. Ignoring for now surface adsorbates, the transport rate depends on the thermal conductance of the substrate: conductive materials efficiently redistribute the excess energy locally injected by the tip thus leading to a comparatively high heat transport rate. The opposite regime applies to insulating systems, whose temperature increases quickly near the tip point of contact, hence reducing any subsequent thermal flow. For a constant electrical power dissipated at the cantilever end, the immediate consequence is a sample-dependent temperature drop at the tip that can be monitored locally with the aid of the probe NV. This is shown in Fig. 3a where we measure the NV frequency shift (relative to room temperature) as a function of the applied voltage for substrates of varying thermal conductivity. In all cases, we find a quadratic response but the scaling depends on the sample material. In particular, the frequency shift is minimum when the tip is in contact with bulk diamond, the system with the highest thermal conductivity.

Figure 3b shows the same data set, this time expressed as the tip temperature T_t and plotted as a function of the material thermal conductivity (see also Supplementary Fig. 2 for details). The near-logarithmic dependence unveils an increasingly lower contrast between materials whose thermal conductivities are comparatively high. We interpret this observation as a direct consequence of the finite thermal conductivity of intrinsic silicon, which sets an upper limit on the rate of energy transfer from the main heater body into the tip. As the substrate thermal

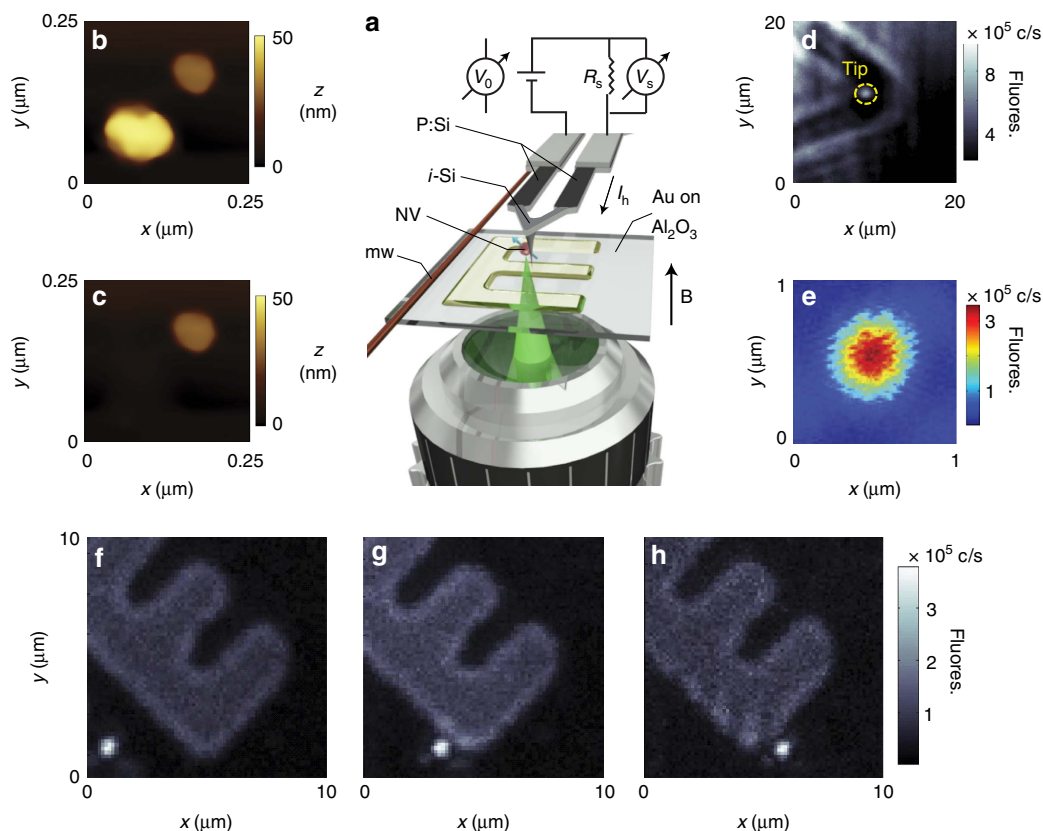


Figure 1 | Approach to NV-enabled thermal scanning microscopy. (a) Schematics of our experimental setup. An electrical current circulates along the arms of a thermal AFM cantilever (phosphorous-doped Si) and heats up the end section above the tip (intrinsic Si). A high-NA objective excites and collects the fluorescence emitted by a diamond-nanocrystal-hosted NV attached to the AFM tip. A wire on the sample surface serves as the source of mw. The resistance (and thus temperature) of the intrinsic segment of the cantilever can be determined from the measured current $I_h = V_s/R_s$ and applied voltage V_0 . Our experiments are carried out in the presence of a magnetic field B along the direction normal to the sample. (b) AFM image of two diamond nanoparticles on a glass substrate. (c) Same as before but after firmly scanning the tip on the larger nanocrystal. Comparison with **b** shows the particle has been removed from the substrate. (d) Fluorescence image of the cantilever end and tip. Light from the tip-attached nanocrystal can be clearly separated from the background (yellow circle). (e) Zoomed confocal image of the NV centre in **d**. (f–h) Sequential fluorescence images of the nanoparticle-hosted NV as the AFM scans a micro-structured surface. The mild fluorescence in the back—here serving as a reference—originates from a 18-nm thick, ‘E’-shaped pattern of (semitransparent) gold on a sapphire substrate.

conductivity κ_s increases, the (steady-state) tip temperature asymptotically approaches a limit value thus making the system incrementally less sensitive to changes in the substrate ability to transport heat. Implicit in this picture is the appearance of a temperature gradient between the heater body and the AFM tip, a notion we confirm by comparing the temperatures inferred from the voltage drop or the NV frequency shift (Fig. 3c). Unlike Fig. 2, we find that T_t consistently takes a value lower than the heater temperature T_h , the difference growing with the substrate conductivity. For example, for $T_h = 500$ K, contact with a diamond crystal brings the tip temperature down by about 100 K. This behaviour can be captured quantitatively via a model that takes into account the thermal resistance of the tip, the sample and the interface (see Supplementary Note 2 and refs 19,20 for details).

Building on the sensitivity of the nanodiamond-hosted NV, we record the tip temperature as we scan a phantom structure formed by a patterned, 18-nm-thick film of gold on sapphire, shown for reference in Fig. 4a (see also Supplementary Fig. 3). This image effectively corresponds to a heat dissipation map, largely correlated with the substrate thermal conductivity if the thermal impedance at the point of contact is substrate-insensitive (Supplementary Note 2). Compared with the AFM image, the coarser pixel size (~ 50 nm) is a consequence of our presently

asynchronous operation of the atomic force and confocal microscopes (the tip must be independently positioned before NV readout) and hence does not reflect on the technique’s spatial resolution, ultimately defined by the AFM tip radius (10 nm). This ideal limit, however, can only be reached as the heater-substrate temperature difference $\Delta T_{hs} \equiv |T_h - T_s|$ —and, correspondingly, the effective sample volume—is brought to a minimum. The latter is demonstrated in Fig. 4c displaying one-dimensional cross-sections of the sample gold structure at different heater temperatures; the measured thermal conductivity follows the sample composition more closely for the lower value of ΔT_{hs} , although at the expense of a partial sensitivity loss (see below). This behaviour exposes a trait common to most forms of scanning microscopy, namely, spatial resolution and detection sensitivity are inversely related.

Of note, the image in Fig. 4b shows some patches of low (high) thermal conductance within (outside) the contour of the gold structure that do not correlate with the local topography (compare, for example, circled areas in Fig. 4a,b). We hypothesize that the discrepancy may stem from a thin (< 2 nm) residual layer of photoresist (gold) after completion of the pattern (see below Methods for details). This notion is consistent with the critical role assigned to the interface thermal impedance in the accepted models of energy flow between AFM tips and substrates

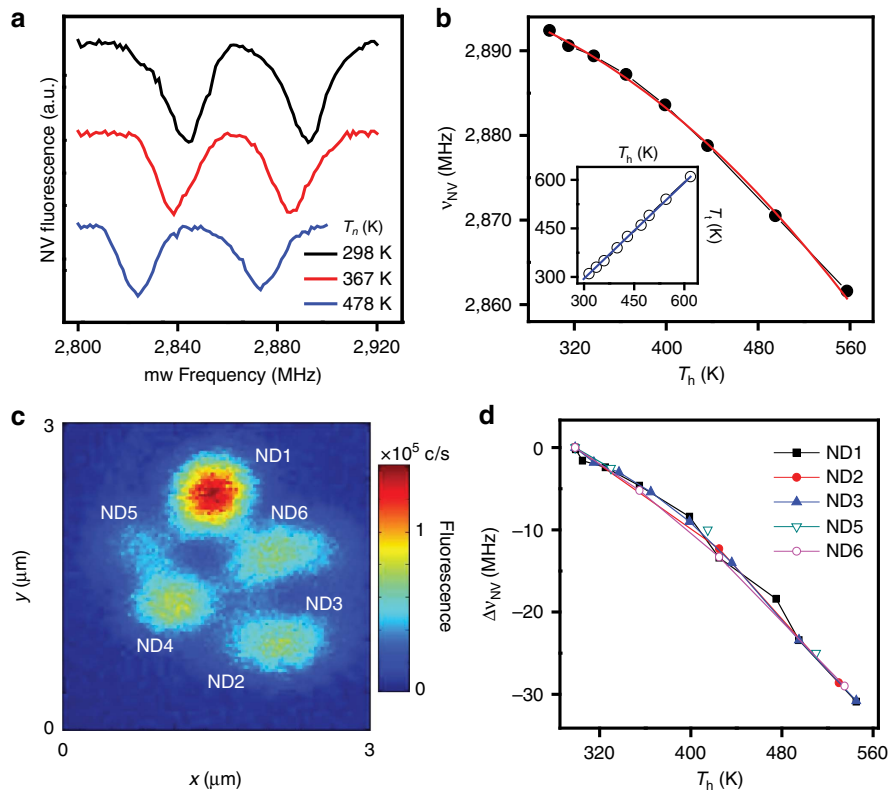


Figure 2 | NV-spin-assisted sensing of the AFM tip temperature. (a) Optically detected magnetic resonance spectra of an NV centre attached to the thermal tip at three different heater temperatures T_h . The right (left) dip corresponds to the $m_s = 0 \leftrightarrow m_s = +1$ transition (the $m_s = 0 \leftrightarrow m_s = -1$ transition) between the levels of the NV ground-state spin triplet. The line splitting originates from a ~ 1 -mT magnetic field aligned along the NV axis. Spectra have been displaced vertically for clarity. (b) Temperature dependence of the $m_s = 0 \leftrightarrow m_s = +1$ transition frequency ν_{NV} ; the red trace is a quadratic fit. T_h is determined from the resistance of the intrinsic section of the cantilever (see Methods for details). The inset shows the diamond nanoparticle temperature T_t using the known relation with the NV resonance frequency as a function of the heater temperature T_h for a tip exposed to ambient. Comparison with the graph diagonal (solid blue trace) indicates that both coincide within experimental error. (c) Confocal image of the AFM cantilever in the vicinity of the tip after grafting multiple NV-hosting nanocrystals. (d) Frequency shift $\Delta\nu_{NV}$ relative to room temperature for each of the nanocrystals imaged in c.

in contact²¹, and, if confirmed, could be exploited to highlight slight changes in the surface composition. Interestingly, regions of the gold structure seemingly devoid from surface contamination show at best $\kappa_s^{(\text{Au film})} = 230 \pm 20 \text{ W m}^{-1} \text{ K}^{-1}$, significantly below $314 \text{ W m}^{-1} \text{ K}^{-1}$, the accepted value for bulk gold²² (see vertical lines in Fig. 3b). This observation is in qualitative agreement with prior thermoreflectance studies (reporting $\kappa_s^{(\text{Au film})} = 155 \pm 20 \text{ W m}^{-1} \text{ K}^{-1}$ for 20 nm gold films on fused silica²³), and suggests the possibility of probing size effects on phonon transport with the spatial resolution inherent to tip-based scanning techniques.

The metric that quantitatively gauges the system sensitivity to the substrate thermal conductivity is given by $\eta_{\kappa_s} \equiv (\Delta\kappa_s)_{\text{min}} \sqrt{t_{\text{tot}}}$, where $(\Delta\kappa_s)_{\text{min}}$ represents the minimum detectable change of thermal conductivity and t_{tot} is the total experimental time. Assuming shot-noise-limited detection, we find (see Supplementary Note 1 and refs 24,25 for details)

$$\eta_{\kappa_s} \sim \frac{2}{\sqrt{\alpha(T_t)t_{2NV}}} \left| \left(\frac{d\nu_{NV}}{dT_t} \right) \left(\frac{dT_t}{d\kappa_s} \right) \right|^{-1}, \quad (1)$$

where $\alpha(T_t)$ is the average number of photons collected during a given measurement time when the NV spin is in the $m_s = 0$ state, and t_{2NV} is the NV spin transverse relaxation time. As expected, improved sensitivity is attained for enhanced photon counts and longer-lived NVs. The latter is possible through the use of

diamond crystals of higher purity¹⁸, or the implementation of multi-pulse thermal sensing sequences^{8,9} (see also Supplementary Fig. 4 for details). To enhance α , one can resort to improved photon collection tactics or to nano-crystals hosting multiple NVs (as demonstrated recently for single-cell thermal sensing²⁶).

A detailed analysis of equation (1) allows us to identify the optimum heater temperature $T_h^{(\text{opt})}$, which emerges from a complex interplay between the rate of frequency change, the NV fluorescence, and the substrate thermal conductivity. For our present conditions, we calculate $T_h^{(\text{opt})} \sim 620 - 660 \text{ K}$, depending on the exact value of κ_s , which corresponds to a tip temperature hovering around $T_t^{(\text{opt})} \sim 570 \text{ K}$. Near this optimum, we find $\eta_{\kappa_s}^{(\text{opt})}/\kappa_s \sim 5\% \text{ Hz}^{-1/2}$ for the lifetime $t_{2NV} = 500 \text{ ns}$ characteristic of the NVs studied herein; relative sensitivities of order 0.2% $\text{Hz}^{-1/2}$ are anticipated, however, given the longer NV lifetimes (approaching 200 μs) possible in higher-quality nanocrystals via the use of dynamical decoupling protocols¹⁸. Notice that despite the local sensitivity minimum at $T_h^{(\text{opt})}$, the practical temperature range of operation is considerably broad (Supplementary Note 1 and Supplementary Fig. 5). For example, at a heater temperature of 400 K, $\sim 250 \text{ K}$ below the optimum and only $\sim 100 \text{ K}$ above ambient conditions, the sensitivity loss relative to $\eta_{\kappa_s}^{(\text{opt})}$ amounts to approximately a factor 2.

In the ideal limit where the thermal impedance at the point of contact is insensitive to the substrate thermal conductivity (Supplementary Note 2 and Supplementary Fig. 6), our ability

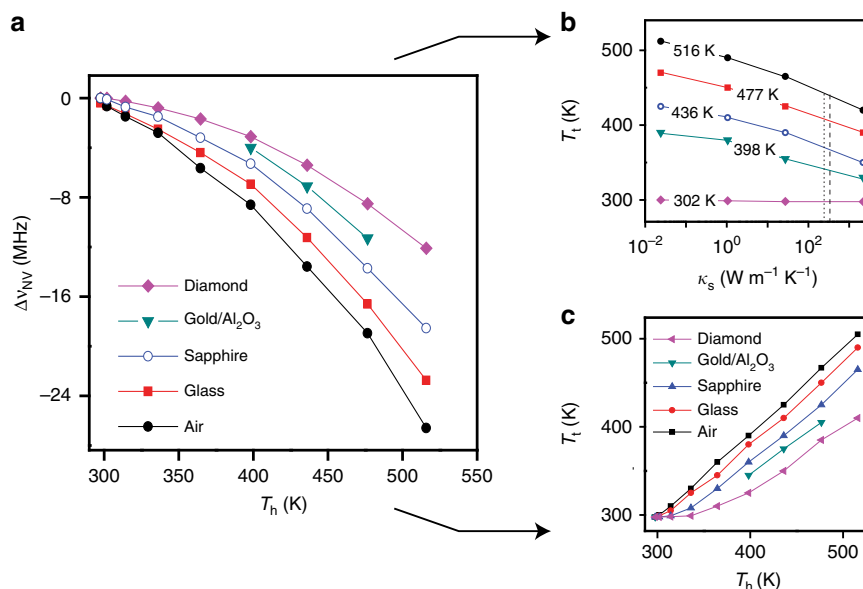


Figure 3 | Influence of the substrate on the tip temperature. (a) NV frequency shift Δv_{NV} relative to ambient as a function of the heater temperature T_h when exposed to air or upon contact with substrates of different composition. The system-dependent NV shifts at a fixed heater temperature indicate contact-induced selective cooling of the AFM tip. (b) Tip temperature T_t versus the thermal conductivity κ_s for various heater temperatures T_h when the heater is exposed to air ($\kappa_s \sim 2 \times 10^{-2} \text{ W m}^{-1} \text{ K}^{-1}$), or in contact with glass ($\kappa_s \sim 1 \text{ W m}^{-1} \text{ K}^{-1}$), sapphire ($\kappa_s \sim 35 \text{ W m}^{-1} \text{ K}^{-1}$) or diamond ($\kappa_s \sim 2 \times 10^3 \text{ W m}^{-1} \text{ K}^{-1}$). Within the range explored, we find $\Delta v_{NV} \sim A_{\kappa_s}(T_h) \ln(\kappa_s/\kappa_t(T_h))$ where $A_{\kappa_s}(T_h), \kappa_t(T_h)$ are functions of the heater temperature T_h (and tip thermal conductivity, see Supplementary Note 1). Using the data in a, we estimate the thermal conductivity of 18 nm gold on sapphire to be $230 \pm 20 \text{ W m}^{-1} \text{ K}^{-1}$ (vertical dotted line), smaller than $314 \text{ W m}^{-1} \text{ K}^{-1}$, the accepted value for bulk gold (vertical dashed line). (c) Tip temperature T_t versus the heater temperature T_h for different substrates. In a and c, 'Gold/ Al_2O_3 ' indicates a 18-nm-thick gold film on sapphire.

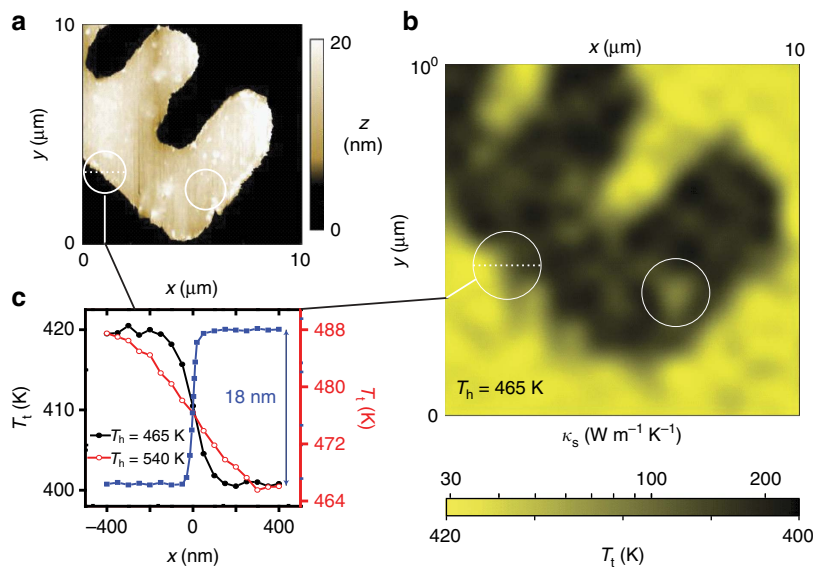


Figure 4 | High-resolution thermal conductivity imaging. (a) AFM topographic image of a 18-nm-thick gold structure on sapphire. (b) NV-assisted thermal conductivity image of the same structure. The heater temperature T_h is 465 K. White circles in a and b indicate example patches of low (high) conductivity inside (outside) the gold structure that do not correlate with the substrate topography. (c) Measured tip temperature near the edge of the gold structure at two different heater temperatures, 465 K (full black circles, left vertical axis) and 540 K (empty red circles, right vertical axis). The topographic curve displaying the 18-nm-thick gold film edge as measured with the AFM (blue squares) is also present for reference. As expected, the spatial resolution of the thermal measurements worsens at higher heater temperatures.

to derive a well-defined relation between T_t and κ_s rests on the implicit assumption of a known, uniform substrate temperature. Strictly, however, this latter condition is never met because the finite thermal conductivity of the substrate produces a thermal gradient between sections of the sample close to or removed from

the tip, thus introducing an uncertainty in the substrate temperature. The concomitant error in the value of κ_s is relatively small in the systems studied herein—where the thermal conductivity does not show a strong temperature dependence—but could play a non-negligible role in some specific cases, for

example, when the tip is hot enough to locally induce a phase transition. Naturally, this problem can be mitigated by reducing the temperature difference between the heater and bulk substrate, although at the expense of a partial sensitivity loss as discussed above. In the opposite regime, enhancing the heater-induced thermal gradient can be exploited as a tool to introduce alternate forms of contrast, particularly in situations where, rather than the exact value of κ_s , one is interested in exposing, for example, compositional sample heterogeneity.

Another aspect of practical interest concerns the influence of the heater current on the NV resonance frequency, and thus on our ability to correctly determine the temperature drop at the tip. A quick inspection of the heater characteristics (see Methods and Supplementary Fig. 7 for details) shows that the current required to bring the tip to 500 K amounts to about 1 mA. A crude estimate for the present heater geometry (in the form of $\sim 1 \mu\text{m}$ thick, $20 \mu\text{m}$ wide V-shape, see Fig. 1a) yields a magnetic field B_c of order $10 \mu\text{T}$ along an axis perpendicular to the tip, which translates to a frequency shift of $\sim 300 \text{ kHz}$ for a properly oriented NV. Although significantly smaller than the NV line width herein, comparable shifts can be easily picked up, particularly if longer-lived NVs are used as the probe. We note, however, that because the tip makes a marginal contribution to the total heater mass, the cantilever current is insensitive to a temperature drop in the tip. Correspondingly, B_c has no impact on the recorded images other than a minor readout shift uniform throughout the scan. Further, this shift is negligible if the NV axis and the field direction are perpendicular, as in the present case.

Time response. The small mass and high thermal conductivity of the diamond nanocrystal may be exploited to probe fast, time-dependent physical processes impacting the energy flow between the tip and the substrate (for example, transient heat waves or fast phase transitions²⁷). As a proof of principle, we apply a square voltage pulse (rise/decay time of 4 ns) between the two conducting arms of the cantilever, and use the NV centre to monitor the corresponding temperature change at the tip. The pulse sequence is presented in Fig. 5a: To read T_t at a given time, we collect the NV fluorescence upon NV initialization via a

1- μs -long pulse of green light and a 500-ns inversion pulse of mw resonant with the NV $m_S = 0 \leftrightarrow m_S = 1$ transition at 436 K. Given the spectral selectivity of the mw pulse, the spin inversion is conditioned on the diamond nanocrystal temperature thus making the NV fluorescence sensitive to the applied voltage.

The result is presented in Fig. 5b for the case of a 6-ms-long voltage pulse; the NV fluorescence is initially bright because the mw is off resonance at room temperature and hence has no effect on the NV spin. Upon current injection at $t = 6 \text{ ms}$, the cantilever reaches the steady-state temperature $T_h = 436 \text{ K}$, which is accompanied by a concomitant reduction of the NV fluorescence upon spin inversion. The transition between both stationary states is exponential and has a characteristic response time $t_d = 184 \mu\text{s}$ (inset in Fig. 5b). This value is in good agreement with prior studies on similar thermal AFM probes²⁸, and is determined by the heat capacity of the intrinsic section of the cantilever and the probe reactance. We emphasize that t_d must not be confused with the time resolution, ultimately defined by the NV spin readout time $t_r \sim 1 \mu\text{s}$. The latter is much longer than the time t_1 it takes the tip (and the adjacent diamond nanocrystal) to thermalize with the substrate. For example, assuming a distance $\lambda \sim 100 \text{ nm}$ between the 50-nm nanocrystal and the tip apex, a crude estimate for a silicon tip yields $t_1 \sim \lambda^2 \rho_t c_t / \kappa_t \sim 100 \text{ ps}$, where we have used the room temperature values of the tip thermal conductivity κ_t , specific heat c_t and density ρ_t . Note that as the thermal conductivity of diamond is about ten times greater than silicon, the nanoparticle shares the tip temperature at all times. Such a short time scale could find use, for example, in the characterization of the thermal response of complementary metal-oxide semiconductor devices, of order 10 ns (ref. 29). Given that $t_1 \ll t_r$, however, higher photon collection efficiency and adapted sensing protocols will be mandatory to access this ultrafast regime.

Discussion

Although the experiments herein are conceived to measure the temperature drop in the thermal tip upon contact with a cooler substrate, the converse approach is also conceivable, namely, an NV near the apex of a tip in a room temperature cantilever can be

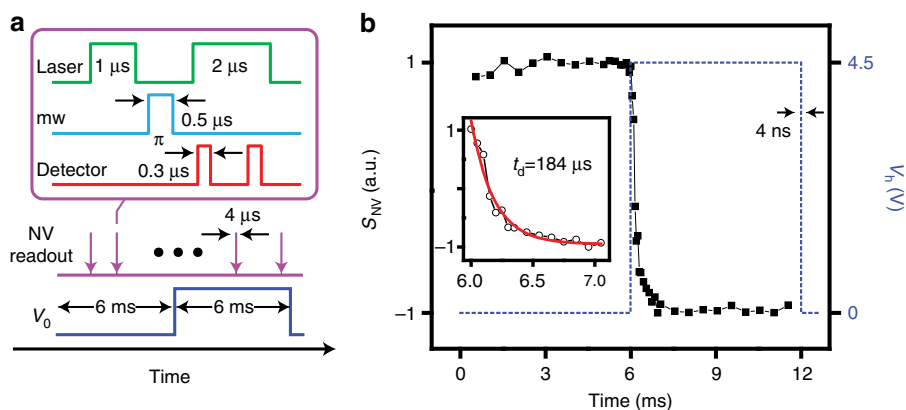


Figure 5 | Probing time-dependent thermal processes. (a) Pulse sequence. We induce a temperature transient in the tip by applying a sharp (4 ns rise/decay time) voltage pulse across the thermal cantilever. We monitor the tip temperature by reading the NV spin state at different points during the application of the voltage pulse (purple arrows). The readout protocol (upper square) relies on the fluorescence collected upon NV initialization (1 μs laser pulse) and application of a selective π -pulse (0.5 μs of mw) resonant with the NV $m_S = 0 \leftrightarrow m_S = 1$ transition at $T_h = 436 \text{ K}$ (corresponding to $V_0 = 4.5 \text{ V}$). The photo-detector is opened twice during the readout, the first time to collect the spin-dependent fluorescence (300 ns read) and the second one to acquire a reference (300 ns) after the NV re-pumps into $m_S = 0$. (b) NV response S_{NV} (left vertical axis) as a function of time; the scale is normalized relative to the maximum NV fluorescence contrast. The signal goes from bright to dim as the voltage pulse (dashed blue line) reaches its maximum (right vertical axis) and the NV tunes to resonance with the mw pulse. The figure inset zooms on the NV signal transition around 6 ms; we find a time constant $t_d = 184 \mu\text{s}$.

used to reconstruct the temperature map of a hot substrate. This configuration could be exploited, for example, to identify and characterize the ‘hot spots’ forming at the junctions of semiconductor structures, known to play a central role in the generation of heat within integrated electronic devices. By the same token, pairs of NV-hosting AFM tips—one serving as a heat source, the other as a local temperature sensor—could provide new opportunities for the investigation of heat transport in nanostructured systems with high spatial resolution. Naturally, this notion can be extended to include systems of multiple, arrayed thermal cantilevers already developed for high-density thermo-mechanical data storage³⁰.

Of note, physical contact between the thermal tip and the substrate is not a mandatory condition, particularly if a tuning fork is used to control the distance to the sample surface with high precision. For example, ~ 1 nm gaps between the tip and the surface provide an ideal platform for the investigation of radiative transport at the nanoscale³¹. Along these lines, transition to a single-sided geometry—already implemented in recent demonstrations of nanoscale NV magnetometry—can extend the present result to the more general class of opaque materials, precluded in this initial demonstration. Likewise, NV centres engineered within diamond films overgrown on a thermal AFM probe provide an alternate, arguably more robust platform than the grafted nanoparticle presented herein, particularly if precision implantation³² is used to control the NV position relative to the tip apex. This class of sharp (sub-10 nm) NV-hosting thermal tips could be applied to a range of outstanding problems including the understanding of heat transport across interfaces connecting dissimilar materials, or to the investigation of phonon dynamics in narrow gaps and in molecular or two-dimensional systems weakly coupled to the substrate³³.

Methods

Sample preparation. To carry out the experiments of Fig. 4, we used ultraviolet lithography to create a gold grid ($314 \text{ W m}^{-1} \text{ K}^{-1}$) on a 80- μm -thick sapphire substrate ($30 \text{ W m}^{-1} \text{ K}^{-1}$). Sapphire was spin coated with 1:2 NR9-1000PY:IPA for 3 min at 6,100 r.p.m., soft-baked atop a preheated 130- μm -thick glass coverslip at 90 °C for 1 min, exposed with a chromium pattern by ultraviolet lamp for 5 s, hard-baked at 100 °C on the same coverslip for 1 min, and then developed in RD6 for 7 s before rinsing with deionized water. Gold was sputtered on to the resist pattern for 180 s at 20 mA and 45 mTorr and then ultra-sonicated in acetone for 5 s for lift-off. The resulting Au grid lines, separated by 100 μm , had nodes individually labelled by four coordinate numbers. Each numeric symbol has a line width of 2 μm . The pattern is about 18 nm thick and nearly optically transparent, which renders the structure compatible with the two-sided geometry of our confocal/AFM setup. The experiment in Fig. 4 was done on a particular coordinate number with ideal optical characteristics (see Supplementary Fig. 3 for details).

Operation of the thermal AFM tip. We control the heater temperature T_h via the circuit sketched in Fig. 1a. We use a power supply to induce a voltage difference V_0 up to 20 V; the series resistance $R_s = 2 \text{ k}\Omega$ protects the cantilever from current spikes and allows us to determine the current $I_h = V_s/R_s$ circulating through the heater via the measured voltage drop V_s . We determine the heater resistance R_h via the relation

$$R_h(T_h) = R_s \frac{(V_0 - V_s)}{V_s}, \quad (2)$$

where we made explicit the dependence on the heater temperature T_h . The latter, in turn, can be controlled via the power P_h dissipated at the cantilever given by

$$P_h = V_s \frac{(V_0 - V_s)}{R_s}. \quad (3)$$

In Supplementary Fig. 7a, we plot R_h as a function of the dissipated power P_h . Below the critical value $P_h^{(c)} = 8.6 \text{ mW}$, the cantilever resistance increases monotonically from about $\sim 1 \text{ k}\Omega$, the value at room temperature, to about 4.5 k Ω . This increase reflects the reduced mobility of the conduction electrons in the doped legs of the cantilever at higher temperatures. The sharp decay at higher applied voltages is a direct consequence of the abrupt thermal activation of silicon carriers at $T_h^{(c)} = 823 \text{ K}$, which provides an internal temperature reference. On the other hand, *in situ* Raman spectroscopy shows³⁴ that the heater temperature can be

estimated from the linear relation

$$T_h = T_a + \left(T_h^{(c)} - T_a \right) \frac{P_h}{P_h^{(c)}}, \quad (4)$$

where T_a denotes ambient temperature. Therefore, combining the data from Supplementary Fig. 7a and equations 3 and 4, we can generate a calibration curve between the applied voltage V_0 and the cantilever temperature T_h (Supplementary Fig. 7b).

References

1. Ferain, I., Colinge, C. A. & Colinge, J.-P. Multigate transistors as the future of classical metal–oxide–semiconductor field-effect transistors. *Nature* **479**, 310–316 (2011).
2. Maldovan, M. Sound and heat revolutions in phononics. *Nature* **503**, 209–217 (2013).
3. Vineis, C. J., Shakouri, A., Majumdar, A. & Kanatzidis, M. G. Nanostructured thermoelectrics: big efficiency gains from small features. *Adv. Mater.* **22**, 3970–3980 (2010).
4. Garcia, R., Knoll, A. W. & Riedo, E. Advanced scanning probe lithography. *Nat. Nanotechnol.* **9**, 577–587 (2014).
5. Pan, L. & Bogy, D. B. Data storage: heat-assisted magnetic recording. *Nat. Photon* **3**, 189–190 (2009).
6. Doherty, M. W. *et al.* The nitrogen-vacancy colour centre in diamond. *Phys. Rep.* **528**, 1–45 (2013).
7. Acosta, V. M. *et al.* Temperature dependence of the nitrogen-vacancy magnetic resonance in diamond. *Phys. Rev. Lett.* **104**, 070801 (2010).
8. Toyli, D. M. *et al.* Fluorescence thermometry enhanced by coherence of single spins in diamond. *Proc. Natl Acad. Sci. USA* **110**, 8417–8421 (2013).
9. Toyli, D. M. *et al.* Measurement and control of single nitrogen-vacancy center spins above 600 K. *Phys. Rev. X* **2**, 031001 (2012).
10. Neumann, P. *et al.* High-precision nanoscale temperature sensing using single defects in diamond. *Nano Lett.* **13**, 2738–2742 (2013).
11. Grinolds, M. S. *et al.* Subnanometre resolution in three-dimensional magnetic resonance imaging of individual dark spins. *Nat. Nanotechnol.* **9**, 279–284 (2014).
12. Häberle, T., Schmid-Lorch, D., Reinhard, F. & Wrachtrup, J. Nanoscale nuclear magnetic imaging with chemical contrast. *Nat. Nanotechnol.* **10**, 125–128 (2015).
13. Rugar, D. *et al.* Proton magnetic resonance imaging using a nitrogen–vacancy spin sensor. *Nat. Nanotechnol.* **10**, 120–124 (2014).
14. Rondin, L. *et al.* Nanoscale magnetic field mapping with a single spin scanning probe magnetometer. *Appl. Phys. Lett.* **100**, 153118 (2012).
15. Manson, N. B., Harrison, J. P. & Stellars, M. J. Nitrogen-vacancy center in diamond: model of the electronic structure and associated dynamics. *Phys. Rev. B* **74**, 104303 (2006).
16. Plakhotnik, T., Doherty, M. W., Cole, J. H., Chapman, R. & Manson, N. B. All-optical thermometry and thermal properties of the optically detected spin resonances of the NV center in nanodiamond. *Nano Lett.* **14**, 4989–4996 (2014).
17. Lee, J. *et al.* Electrical, thermal, and mechanical characterization of silicon microcantilever heaters. *J. Microelectromech. Syst.* **15**, 1644–1655 (2006).
18. Trusheim, M. E. *et al.* Scalable fabrication of high purity diamond nanocrystals with long-spin-coherence nitrogen vacancy centers. *Nano Lett.* **14**, 32–36 (2014).
19. Yovanovich, M. M., Culham, J. R. & Teertstra, P. Analytical modeling of spreading resistance in flux tubes, half spaces, and compound disks. *IEEE Trans Compon Packaging Manuf Technol A* **21**, 168–176 (1998).
20. Siemens, M. E. *et al.* Quasi-ballistic thermal transport from nanoscale interfaces observed using ultrafast coherent soft X-ray beams. *Nat. Mater.* **9**, 26–30 (2010).
21. Fletcher, P. C., Lee, B. & King, W. P. Thermoelectric voltage at a nanometer-scale heated tip point contact. *Nanotechnology* **23**, 035401 (2012).
22. Langer, G., Hartmann, J. & Reichling, M. Thermal conductivity of thin metal films measured by photothermal profile analysis. *Rev. Sci. Instrum.* **68**, 1510–1513 (1997).
23. Schmidt, A. J., Cheaito, R. & Chiesa, M. Characterization of thin metal films via frequency-domain thermoreflectance. *J. Appl. Phys.* **107**, 024908 (2010).
24. Meriles, C. A. *et al.* Imaging mesoscopic nuclear spin noise with a diamond magnetometer. *J. Chem. Phys.* **133**, 124105 (2010).
25. Maze, J. R. *et al.* Nanoscale magnetic sensing with an individual electronic spin in diamond. *Nature* **455**, 644–647 (2008).
26. Kucsko, G. *et al.* Nanometre-scale thermometry in a living cell. *Nature* **500**, 54–58 (2013).
27. Wong, H.-S. P. *et al.* Phase change memory. *Proc. IEEE* **98**, 2201–2227 (2010).
28. Park, K., Lee, J., Zhang, Z. M. M. & King, W. P. Frequency-dependent electrical and thermal response of heated atomic force microscope cantilevers. *J. Microelectromech. Syst.* **16**, 213–222 (2007).
29. Pop, E. Energy dissipation and transport in nanoscale devices. *Nano Res* **3**, 147–169 (2010).

30. Vettiger, P. *et al.* The ‘Millipede’—nanotechnology entering data storage. *IEEE Trans. Nanotechnol.* **1**, 39–55 (2002).
31. Kruger, M., Emig, T. & Kardar, M. Nonequilibrium electromagnetic fluctuations: heat transfer and interactions. *Phys. Rev. Lett.* **106**, 210404 (2011).
32. Meijer, J. *et al.* Towards the implanting of ions and positioning of nanoparticles with nm spatial resolution. *Appl. Phys. A* **91**, 567–571 (2008).
33. Cahill, D. G. *et al.* Nanoscale thermal transport. II. 2003–2012. *Appl. Phys. Revs* **1**, 011305 (2014).
34. Nelson, B. A. *Nanoscale Thermal Processing Using a Heated Atomic Force Microscope Tip*. PhD. Dissertation, Dept. of Mechanical Engineering (Georgia Institute of Technology, 2007).

Acknowledgements

We thank Professor W.P. King at the University of Illinois, Urbana-Champaign, for kindly providing the thermal tips used in our experiments. A.L., H.A.-R. and C.A.M. acknowledge support from the National Science Foundation (NSF) through grants NSF-1401632 and NSF-1309640. Y.G. and E.R. acknowledge the support of the Office of Basic Energy Sciences of the US Department of Energy (DE-FG02-06ER46293). Y.G. acknowledges the support of the NSF grant CMMI-143675.

Author contributions

A.L. performed the measurements on thermal conductivity, with the assistance of X.L.; H.A.-R. fabricated the sample microstructures and assisted with some of the imaging

measurements. Y.G. and E.R. developed the model for tip-surface heat transport. C.A.M., A.L. and E.R. conceived the experiments and analysed the data. All authors wrote and commented on the manuscript.

Additional information

Supplementary Information accompanies this paper at <http://www.nature.com/naturecommunications>

Competing financial interests: The authors declare no competing financial interests.

Reprints and permission information is available online at <http://npg.nature.com/reprintsandpermissions/>

How to cite this article: Laraoui, A. *et al.* Imaging thermal conductivity with nanoscale resolution using a scanning spin probe. *Nat. Commun.* 6:8954 doi: 10.1038/ncomms9954 (2015).



This work is licensed under a Creative Commons Attribution 4.0 International License. The images or other third party material in this article are included in the article’s Creative Commons license, unless indicated otherwise in the credit line; if the material is not included under the Creative Commons license, users will need to obtain permission from the license holder to reproduce the material. To view a copy of this license, visit <http://creativecommons.org/licenses/by/4.0/>