

11-12-2018

The application of electric cell-substrate impedance sensing (ECIS) biosensors

Xudong Zhang
CUNY Graduate Center

Sunghoon Jang
CUNY New York City College of Technology

How does access to this work benefit you? Let us know!

Follow this and additional works at: https://academicworks.cuny.edu/ny_pubs

 Part of the [Biomedical Devices and Instrumentation Commons](#)

Recommended Citation

Zhang X, Jang S. The application of electric cell-substrate impedance sensing (ECIS) biosensors. *Int J Biosen Bioelectron.* 2018;4(6):260-261. DOI: 10.15406/ijbsbe.2018.04.00136

This Article is brought to you for free and open access by the New York City College of Technology at CUNY Academic Works. It has been accepted for inclusion in Publications and Research by an authorized administrator of CUNY Academic Works. For more information, please contact AcademicWorks@cuny.edu.

The application of electric cell-substrate impedance sensing (ECIS) biosensors

Abstract

Electric cell-substrate impedance sensing (ECIS) is a label-free and non-invasive technique for analyzing the activities and morphologies of cells. The ECIS sensors are able to measure the impedance spectroscopy of cells attaching on the sensor substrates. The cell activities and morphologies influence the measure impedance directly. Traditional toxicity analysis has complicated processes compared to biosensor-based analysis. In this study, the toxicity analysis was performed with biosensor based on ECIS technique. The experimental results show that the ECIS sensor is able to quickly distinguish the toxic and non-toxic substance.

Keywords: ECIS, biosensor, toxicity analysis

Volume 4 Issue 6 - 2018

Xudong Zhang,¹ Sunghoon Jang²

¹Department of Computer Science, City University of New York, USA

²Department of Computer Engineering Technology, New York City College of Technology, USA

Correspondence: Sunghoon Jang, Department of Computer Engineering Technology, New York City College of Technology, 186 Jay Street, 635 Voorhees Hall Brooklyn, NY 11201-2983, USA, Tel: 718-260-5886, Email Sjang@citytech.cuny.edu

Received: October 30, 2018 | **Published:** November 12, 2018

Introduction

ECIS is a popular technique, which is able to analyze cell behaviors by measuring impedance spectroscopy.^{1,2} The impedance spectroscopy provides information related to cell behavior and morphology, such as attachment, proliferation, barrier function, and migration.¹⁻⁴ One ECIS sensor is usually composed with two or three electrodes, the working electrode and the counter electrode or reference electrode. The reference electrode could provide the standard reference electric potential for electrochemical measurement. During ECIS measurement, the live cells attach and spread on the surface of electrodes of ECIS sensors after seeding. The cells behave like an insulating layer and limits the current flow between the electrodes.^{5,6} As a result, the measured impedance increases right after the cell seeding. The measured impedance will be stable when the cells form a monolayer on the electrodes several hours after seeding. The impedance fluctuates slightly in such dynamic environments, where cell migrate, deform and attach/detach.⁷⁻¹¹ Any variations caused by cell-cell interactions, cell-substrate interactions, or changing cell electrical properties due to chemical, biological, or physical stimuli,^{2,11} will influence the measured impedance spectroscopy. Besides the analysis of cell, ECIS can also be used in analyzing the toxic influence on live cells. Endothelial cells locating on the inner wall of vessels and contact the toxicants directly. Using endothelial cells in toxic testing by ECIS sensors can mimic the body's response to toxicants. Cells lose their dielectric properties, when they are apoptotic after contacting toxicants. The cells monolayer tend to degrade or even detach from the sensing electrodes, which cause the measured impedance decrease dramatically.

Experiments and results

Cell culture

Bovine aortic endothelial cells (BAEC) are used in this study (VEC Technologies, Rensselaer, NY). The BAECs were cultured in cell culture medium. The medium is Minimum Essential Medium (MEM, GIBCO, Grand Island, NY) with 10% fetal bovine serum (FBS, GIBCO, Grand Island NY). The cells are cultured under standard culturing conditions (37°C and 5% CO₂).

Experimental system setup

The cell impedance was measured with impedance analyzer

Agilent 4294 and ECIS Z system (Applied Biophysics, Troy, NY). The BAECs are seeded on the ECIS sensors before impedance measurements. All the ECIS sensors are kept in the incubator, which provide standard cell culture environment. The experimental setup is shown in (Figure 1) (Figure 2) shows the cell morphology right after seeding.

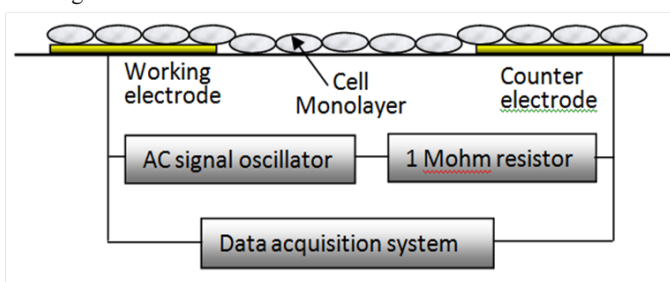


Figure 1 Show the connection between ECIS sensor and data acquisition system.

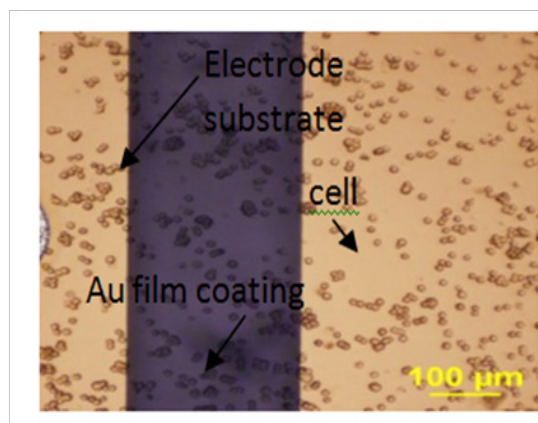


Figure 2 Show the BAEC attach on the multi-electrode arrays surface, 0.5 hour after seeding onto ECIS electrode arrays, seeding density are 150 K/cm², 125 K/cm² and 100 K/cm² respectively.

Toxicity testing

In the toxicity testing, the ECIS sensor (Applied Biophysics, Troy, NY) was used to investigate the influence of lead oxide (PbO) on BAEC cell. Prior to the cell inoculation, suitable amount of 30μg/

ml fibronectin (GIBCO, Grand Island NY) was coated on the surface of sensor to improve cell attachment. The fibronectin coating is kept on the sensor surface for 30 minutes in cell culture incubator before cell seeding. The cell suspension of BAECs is prepared in advance. BAECs were seeded into each culture to satisfy the final cell seeding density of 125,000 cells/cm². The PbO powder was mixed with Dulbecco's Phosphate Buffered Saline (DPBS, Media tech, Inc. Manassan, VA) to obtain 0.01 mM PbO suspension as the toxicant in this study. During the toxicity testing, cell culture medium is replaced by PbO suspension for every ECIS sensor except the control after the cell form a monolayer, which is confirmed under microscope. The cell impedance was measured and analyzed to evaluate the toxic influence. Figure 3 shows the normalized impedance response by introducing 0.01 mM PbO. The normalized impedance was calculated by dividing the measured impedance by the impedance right before introducing toxicant. The normalized impedance values decrease to 0.62 times its original value within 5 hours after introducing toxicant. For the control, the normalized impedance does not change dramatically compared to non-control samples. The impedance decrease indicates the degradation of cell layer due to the toxic effect of PbO. The cells change the morphology or even detach from the sensor surface. The intercellular junction also become weaker than that before toxicant introduction. The cell layer is considered to be an insulation layer between the electrodes of ECIS sensor. The cell detachment or weak intercellular junction will allow the ions move between the electrodes freely. As a result, the measured impedance decreases gradually. Therefore, ECIS can be used to indicate the toxicant effects.^{12,13}

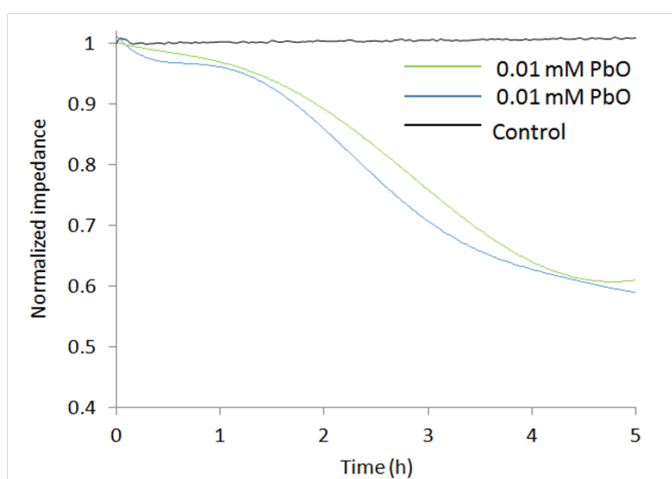


Figure 3 Normalized impedance after introducing 0.01 mM PbO as toxicant.

Conclusion

In this study, the ECIS sensors were used to perform toxicity analysis of PbO on BAECs. The impedance response could clearly identify the toxic effect of PbO.

Acknowledgements

None.

Conflict of interest

Authors declare that there is no conflict of interest.

References

- Giaever I, Keese C. Monitoring fibroblast behavior in tissue culture with an applied electric field. *Proceedings of the National Academy of Sciences*. 1984;81:3761–3764.
- Giaever I, Keese CR. Use of electric fields to monitor the dynamical aspect of cell behavior in tissue culture. *IEEE Transactions on Biomedical Engineering*. 1986:242–247.
- Mitra P, Keese CR, Giaever I. Electric measurements can be used to monitor the attachment and spreading of cells in tissue culture. *Biotechniques*. 1991;11:504–510.
- Tirupathi C, Malik AB, Del Vecchio PJ. Electrical method for detection of endothelial cell shape change in real time: assessment of endothelial barrier function. *Proceedings of the National Academy of Sciences*. 1992;89:7919–7923.
- Voiculescu I, Li F, Liu F. Study of long-term viability of endothelial cells for lab-on-a-chip devices. *Sensors and Actuators B: Chemical*. 2013;182:696–705.
- Ayliffe HE, Frazier AB, Rabbitt RD. Electric impedance spectroscopy using micro channels with integrated metal electrodes. *Journal of Microelectromechanical systems*. 1999;8:50–57.
- Han A, Moss E, Frazier AB. Whole cell electrical impedance spectroscopy for studying ion channel activity. *Proceedings of the 13th International Conference on Solid-State Sensors, Actuators and Microsystems*; 2005; IEEE: 2005. p 1704–1707.
- Han A, Yang L, Frazier AB. Quantification of the heterogeneity in breast cancer cell lines using whole-cell impedance spectroscopy. *Clinical Cancer Research*. 2007;13:139–143.
- Solly K, Wang X, Xu X. Application of real-time cell electronic sensing (RT-CES) technology to cell-based assays. *Assay and drug development technologies*. 2004;2:363–372.
- Zhang X, Li F, Nordin AN. Toxicity studies using mammalian cells and impedance spectroscopy method. *Sensing and bio-sensing research*. 2015;3:112–121.
- Zhang X, Wang W, Li F. Stretchable impedance sensor for mammalian cell proliferation measurements. *Lab on a Chip*. 2017;17:2054–2066.
- Pei Z, Keese CR, Giaever I. Effect of the pSV2-neo plasmid on NIH 3T3 cell motion detected electrically. *Experimental cell research*. 1994;212:225–229.
- Keese CR, Giaever I. A biosensor that monitors cell morphology with electrical fields. *IEEE Engineering in Medicine and Biology Magazine*. 1994;13:402–408.